

WELCOME!

Fall Faculty Meeting
October 28, 2005

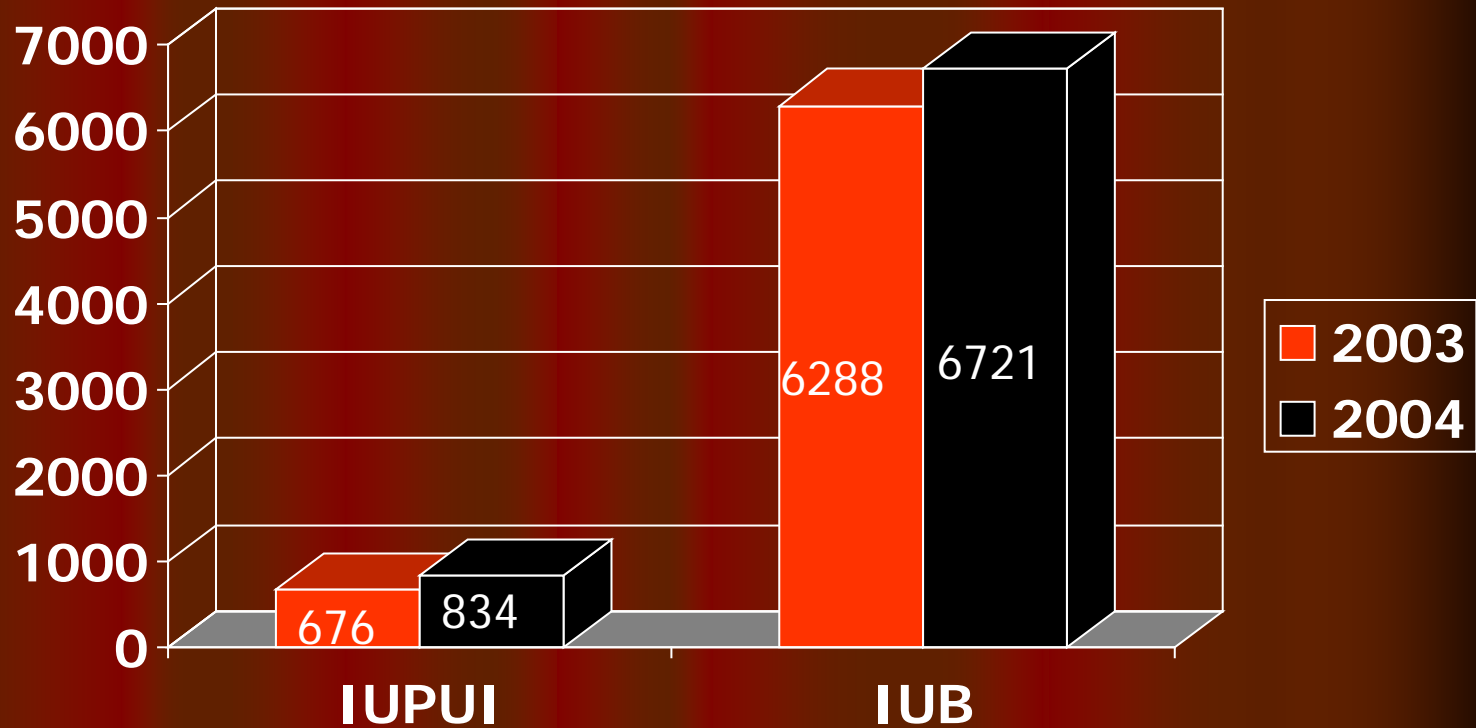


The mission of the Indiana University School of Education is to improve teaching, learning, and human development in a diverse, rapidly changing, and increasingly technological society.

Matching the Promise Campaign Pledges and Expectancies, July 1, 2003 to September 30, 2005

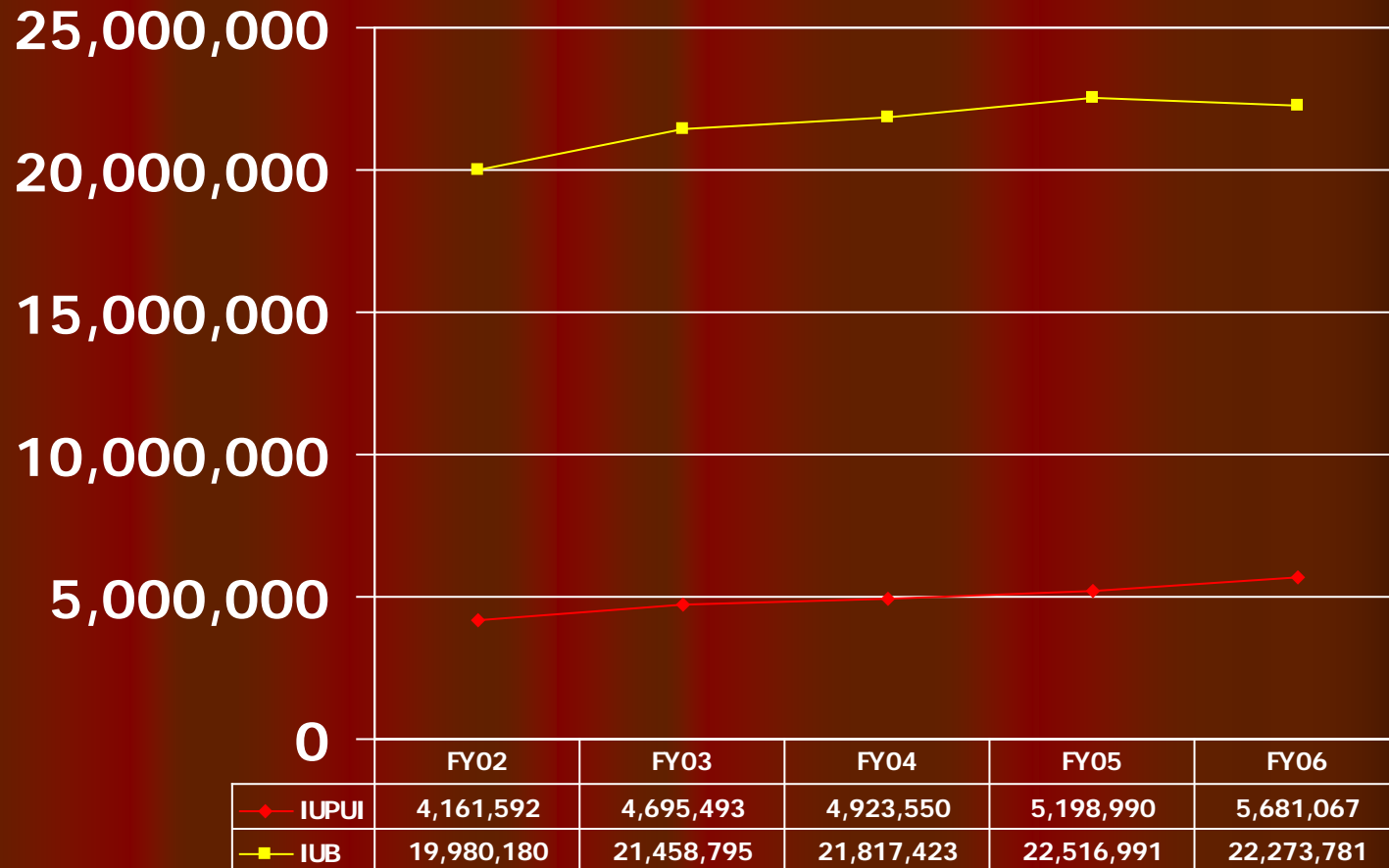
● Scholarships	\$489,625
● Fellowships	887,875
● Scholarships/Fellowships	81,910
● Other	1,504,230
● TOTAL	\$2,963,640

Number of Individual Donors

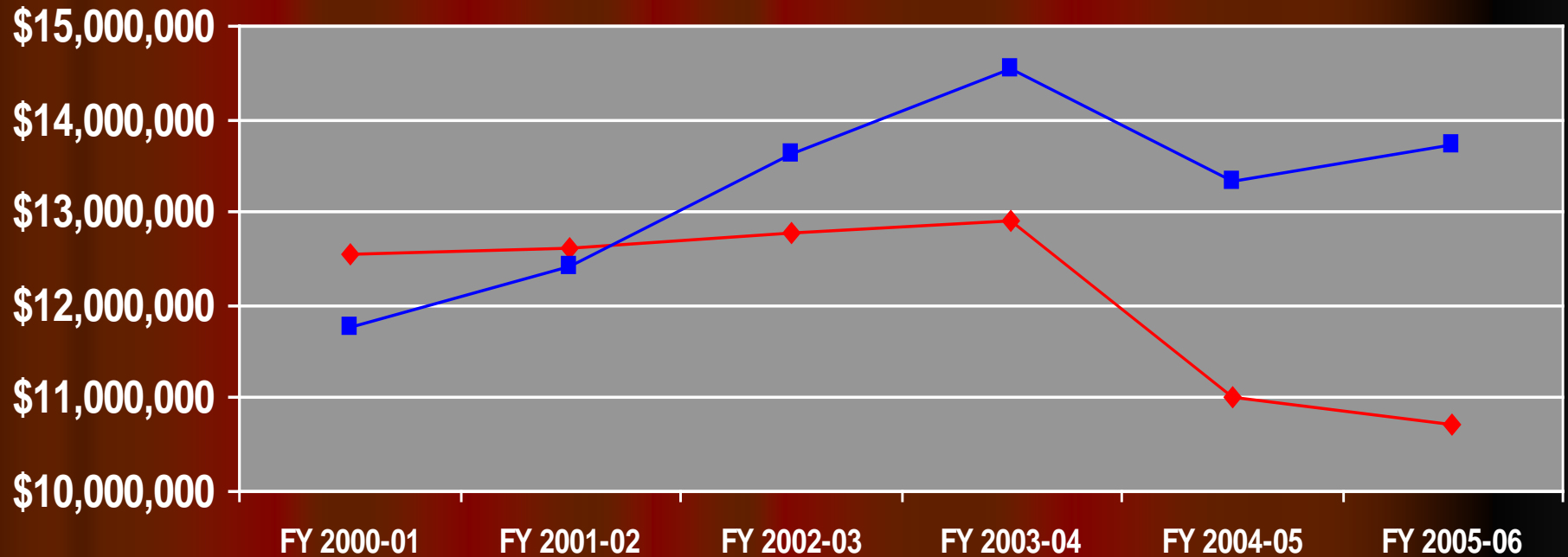


Note: September 30 value of IUB endowment, long-term investments and available cash was \$20,534,968. Scholarship funds awarded in 2004 equal \$124,562 and Fellowship funds equal \$395,165.

IUB and IUPUI Budgets, FY02 to FY05



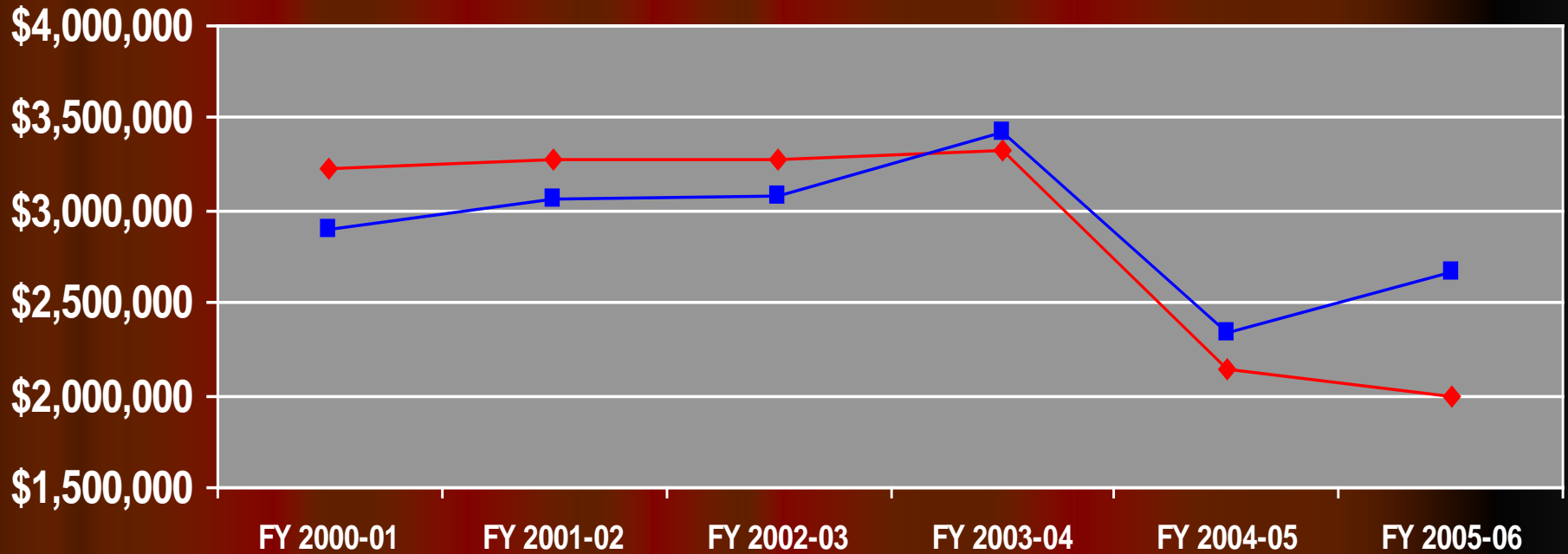
IUB State Appropriations vs. Assessments



◆ State Appropriation
■ Assessments

	FY 2000-01	FY 2001-02	FY 2002-03	FY 2003-04	FY 2004-05	FY 2004-05
State Appropriation	\$12,533,973	\$12,605,121	\$12,785,163	\$12,913,664	\$11,013,119	\$10,719,585
Assessments	\$11,760,624	\$12,424,529	\$13,621,657	\$14,544,844	\$13,340,992	\$13,721,732
	\$773,349	\$180,592	-\$836,494	-\$1,631,180	-\$2,327,873	-\$3,002,147

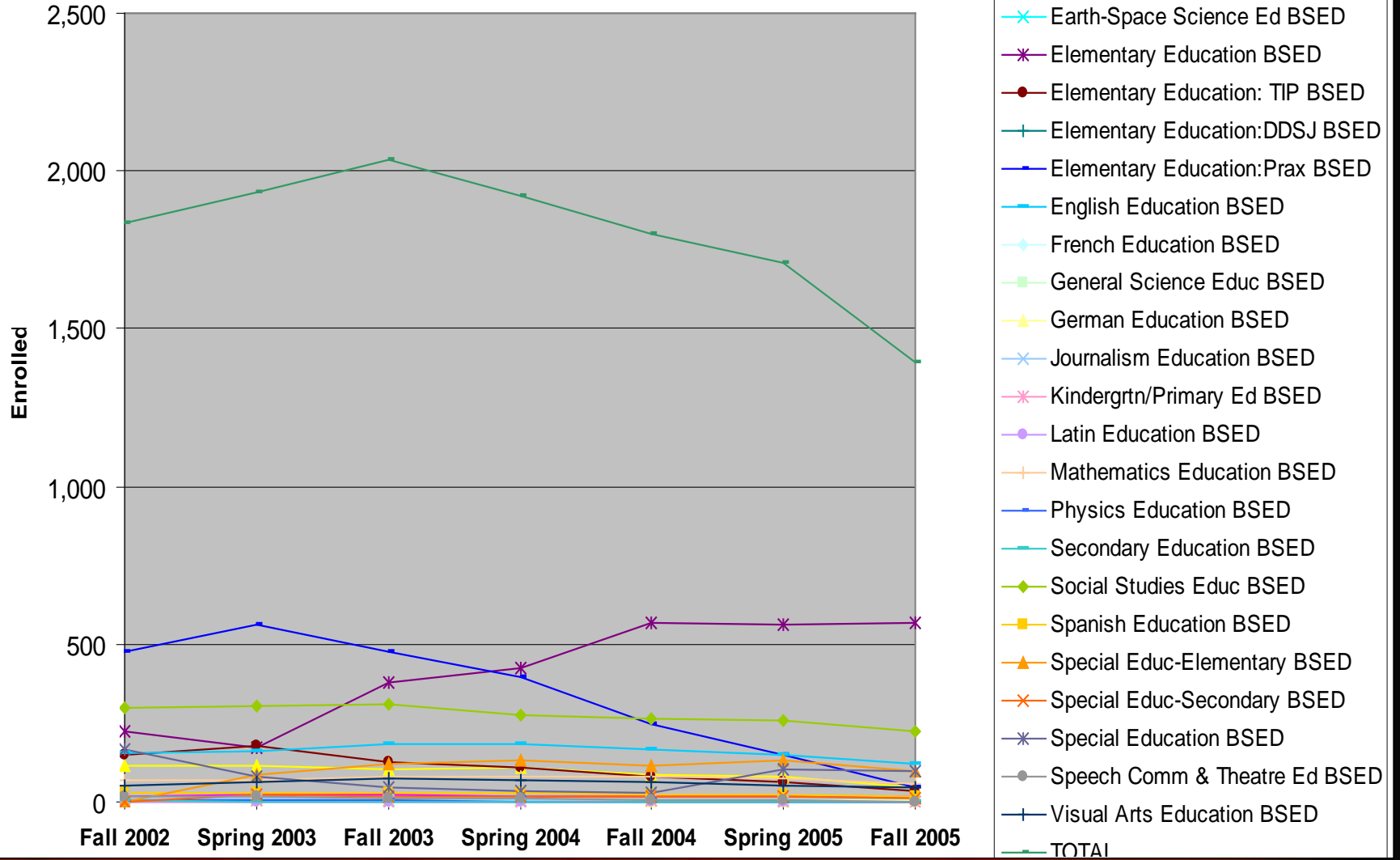
IUPUI State Appropriations vs. Assessments



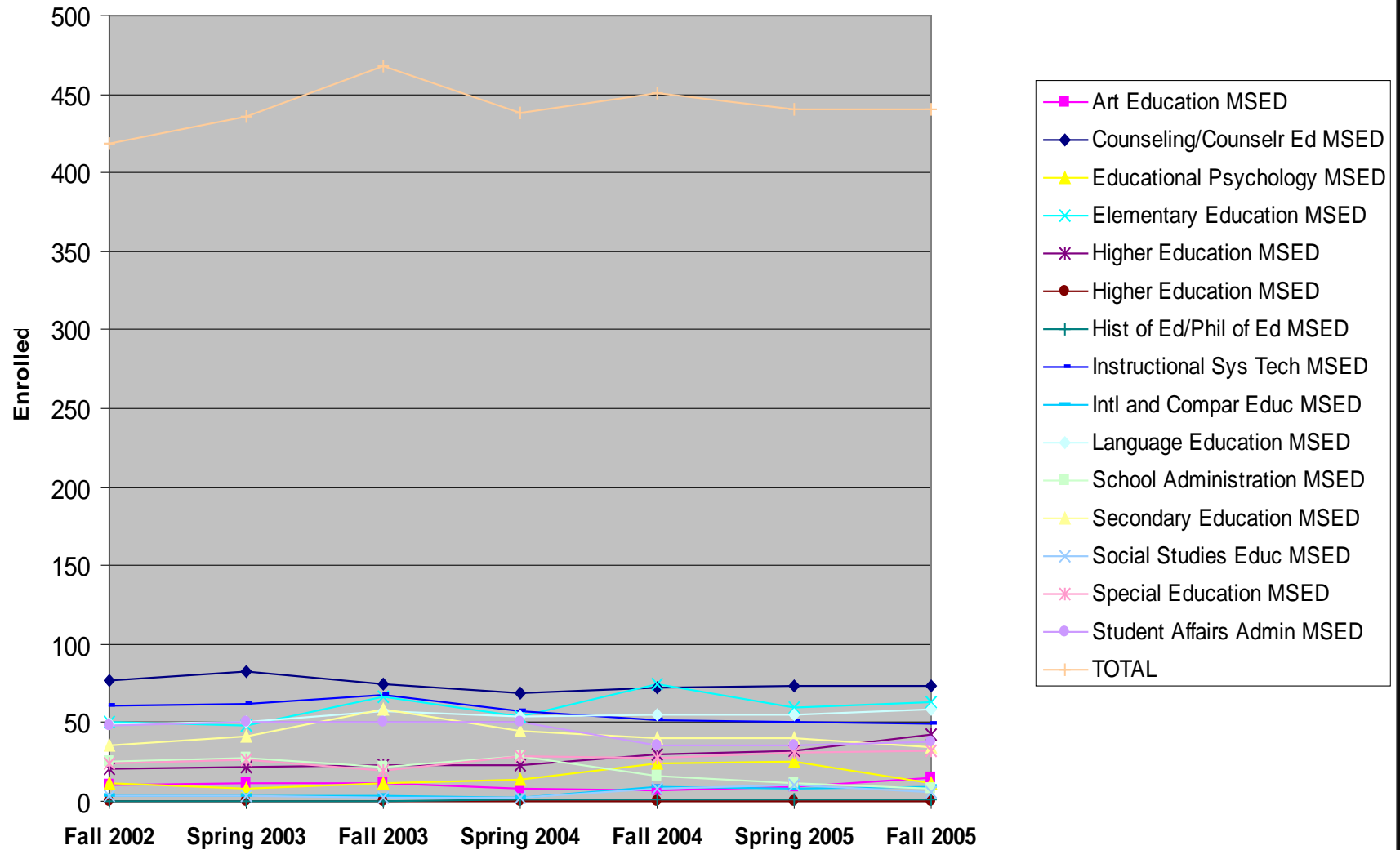
◆ State Appropriation
 ■ Assessments

	FY 2000-01	FY 2001-02	FY 2002-03	FY 2003-04	FY 2004-05	FY 2005-06
State Appropriation	\$3,230,653	\$3,271,086	\$3,280,072	\$3,329,664	\$2,147,516	\$1,990,343
Assessments	\$2,897,072	\$3,062,967	\$3,074,277	\$3,420,530	\$2,343,460	\$2,662,828
	\$333,581	\$208,119	\$205,795	-\$90,866	-\$195,944	-\$672,485

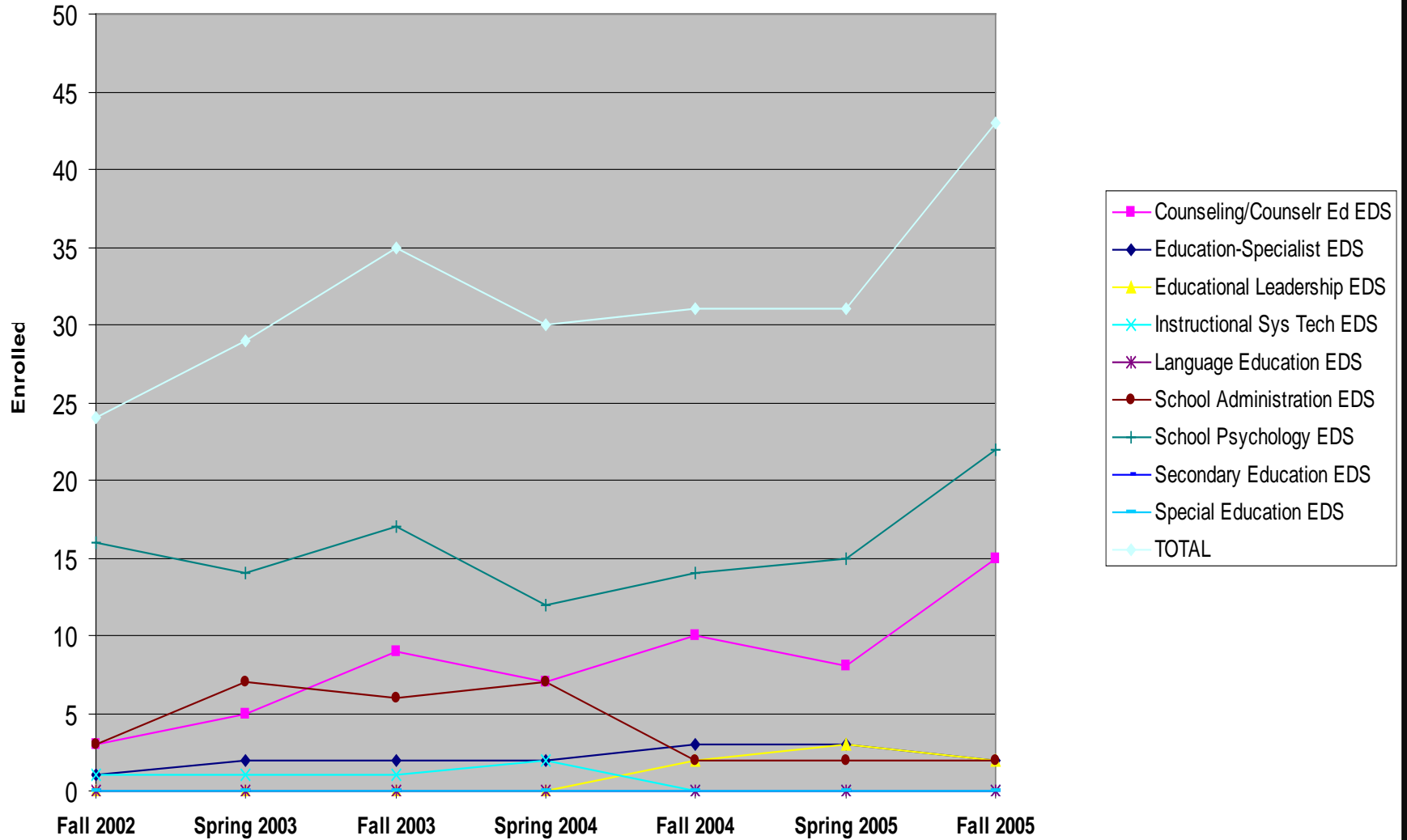
Enrollment by Academic Plan (Term Comparison)



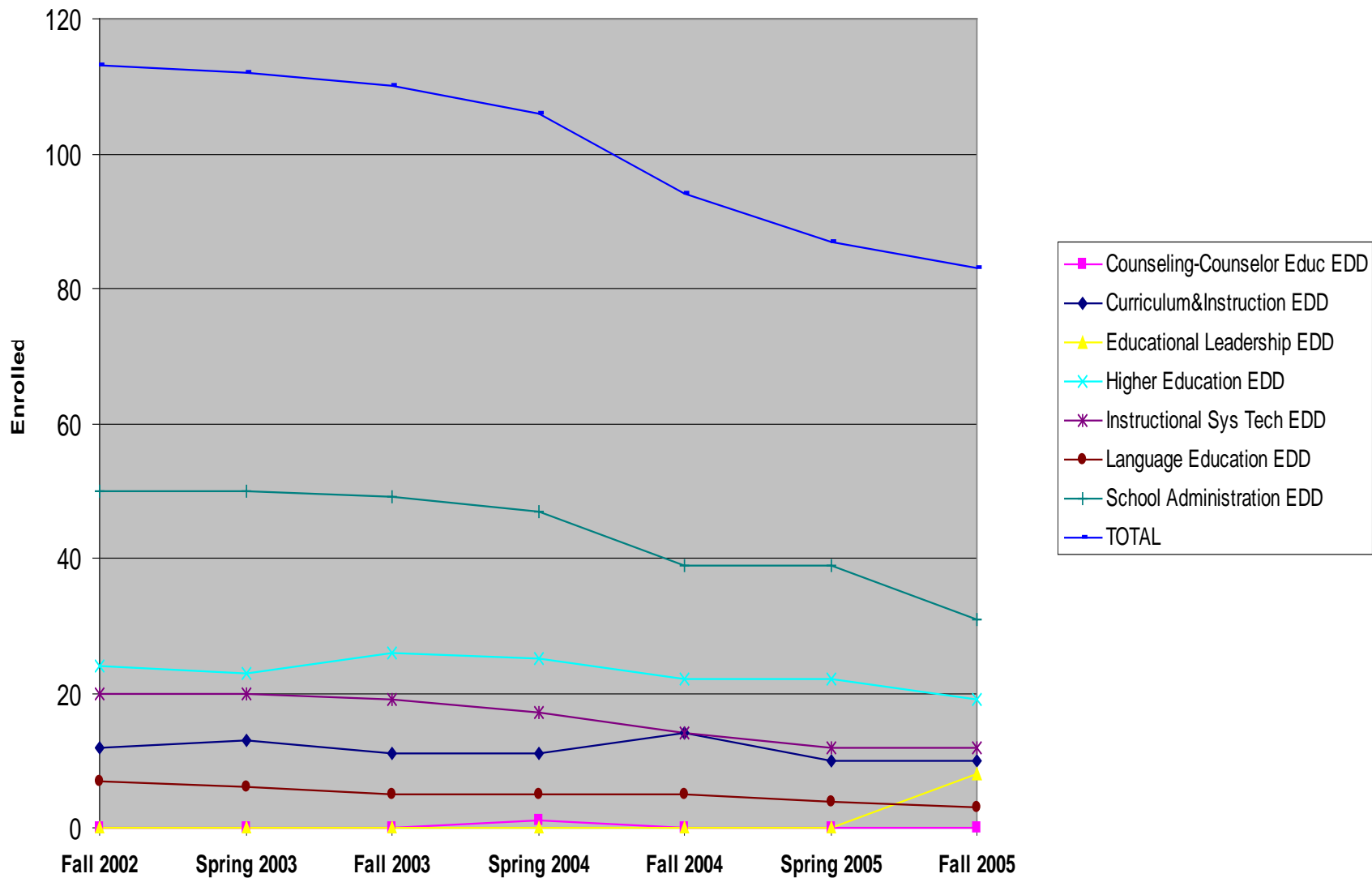
Enrollment by Academic Plan (Term Comparison)



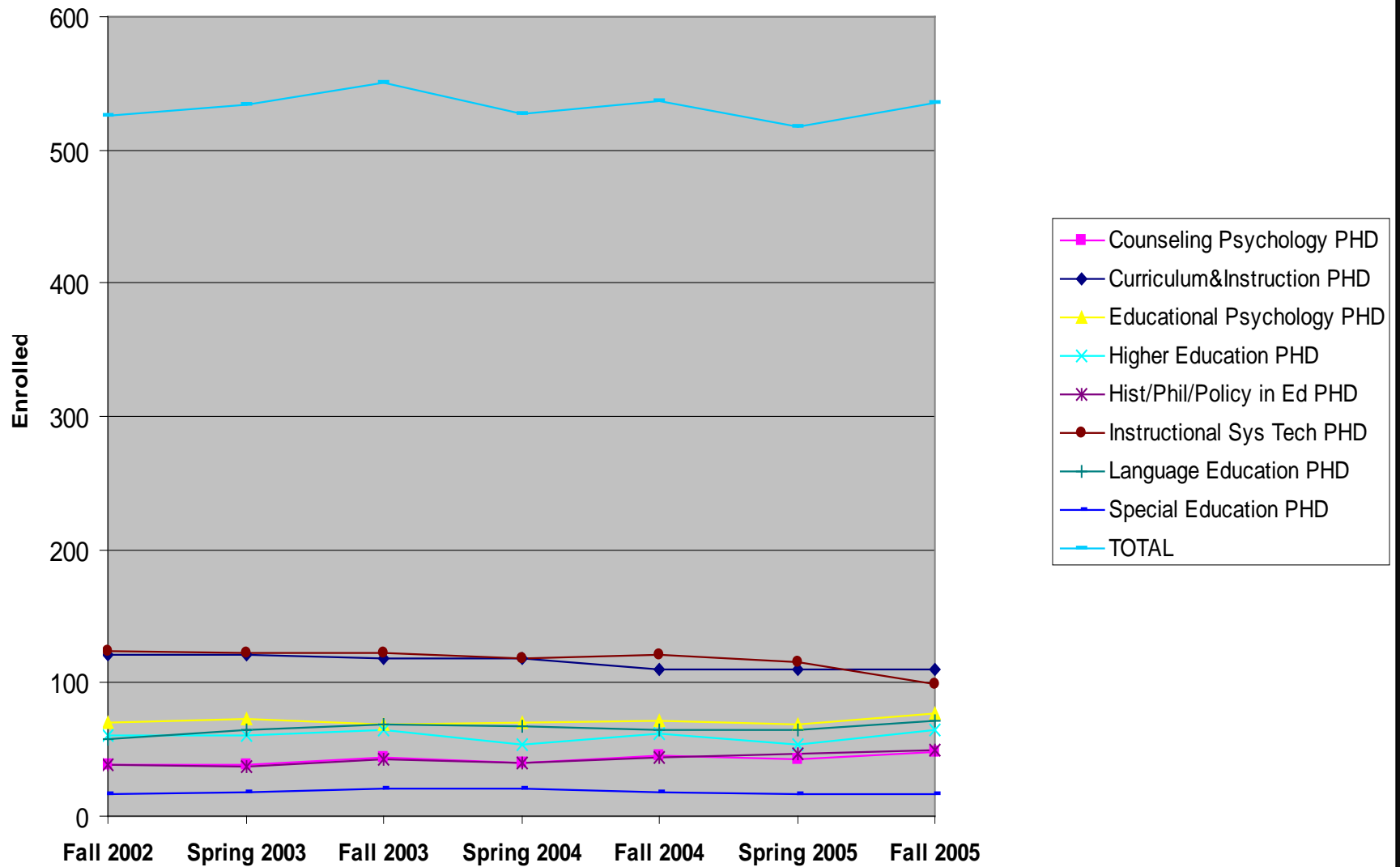
Enrollment by Academic Plan (Term Comparison)



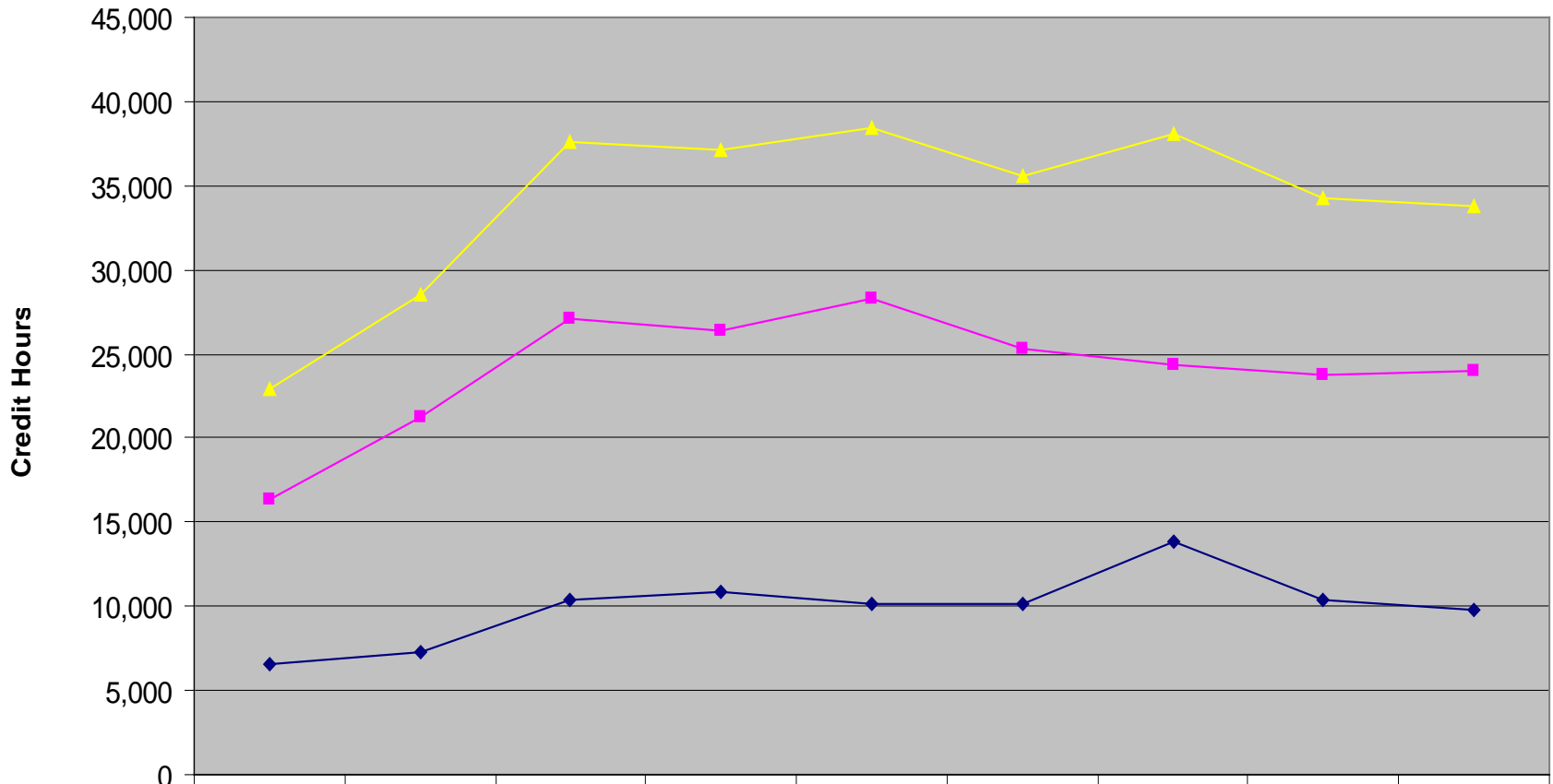
Enrollment by Academic Plan (Term Comparison)



Enrollment by Academic Plan (Term Comparison)

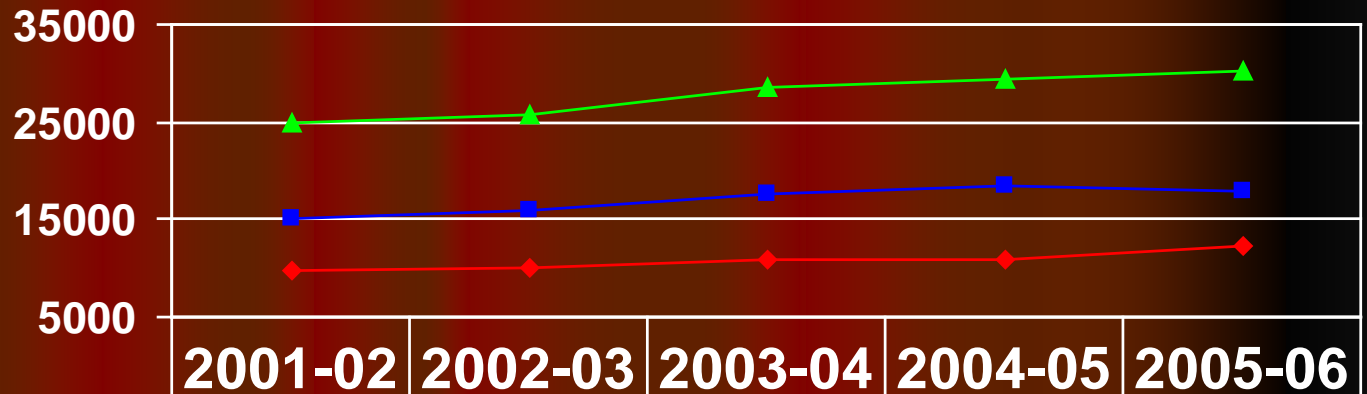


Total Credit Hours by Academic Career (Term Comparison)



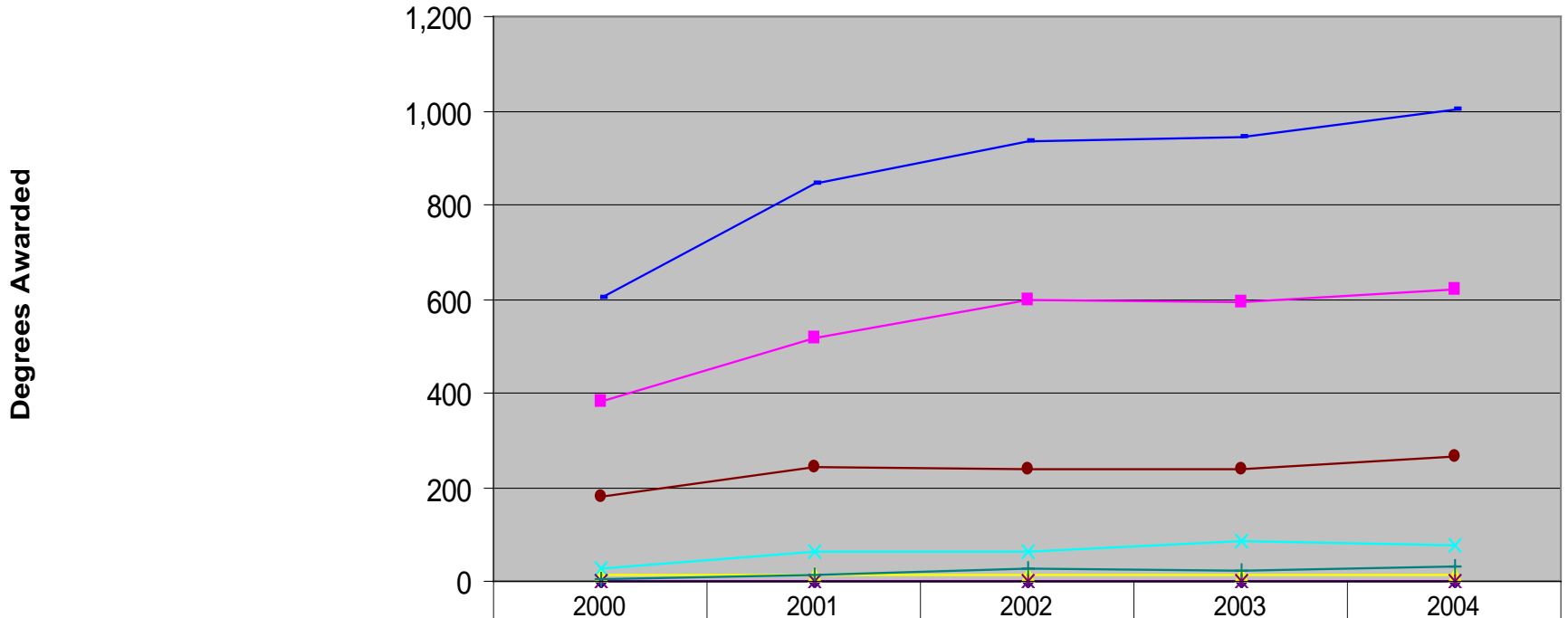
	Fall 2001	Spring 2002	Fall 2002	Spring 2003	Fall 2003	Spring 2004	Fall 2004	Spring 2005	Fall 2005
—■— UGRD	16,357	21,201	27,101	26,332	28,280	25,336	24,312	23,786	23,941
—◆— GRAD	6,619	7,324	10,441	10,833	10,197	10,187	13,794	10,443	9,815
—▲— TOTAL	22,976	28,525	37,542	37,165	38,477	35,523	38,106	34,229	33,756

IUPUI Student Credit Hours 2000-01 to 2004-05



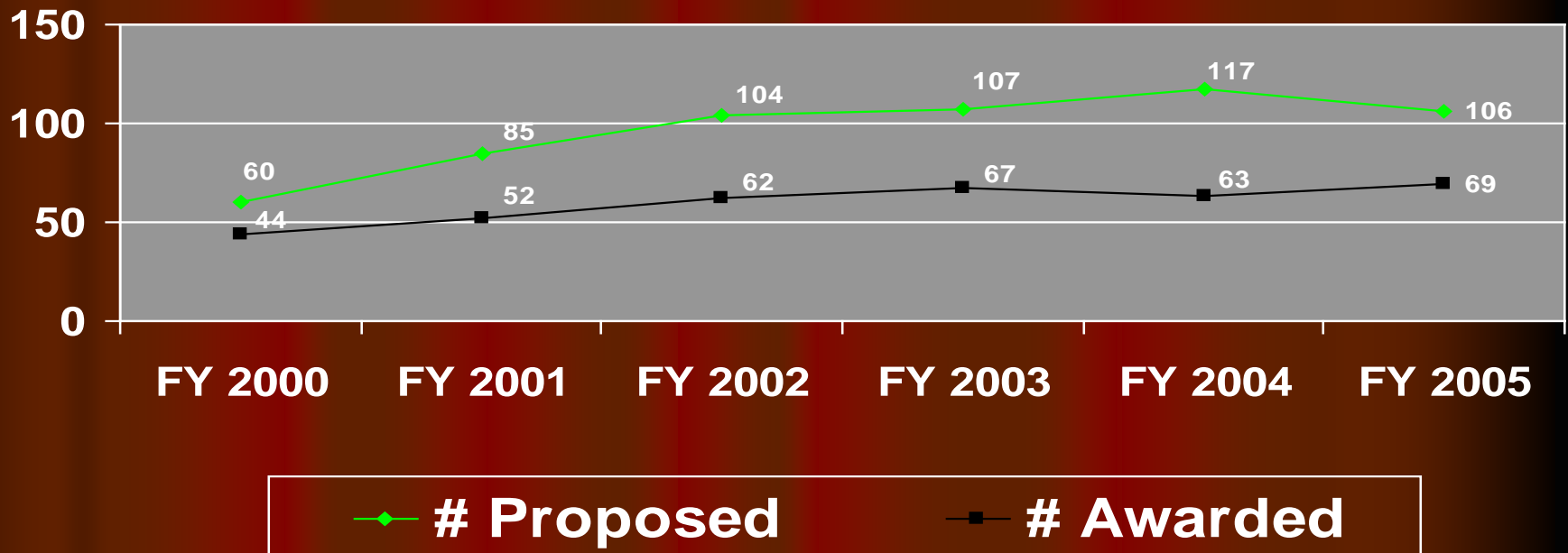
	2001-02	2002-03	2003-04	2004-05	2005-06
◆ Graduate	9,759	9,907	10,852	10,990	12,290
■ Undergraduate	15,029	15,826	17,715	18,556	17,851
▲ Total	24,788	25,733	28,567	29,456	30,141

Degrees Awarded by Type (Academic Year Comparison)



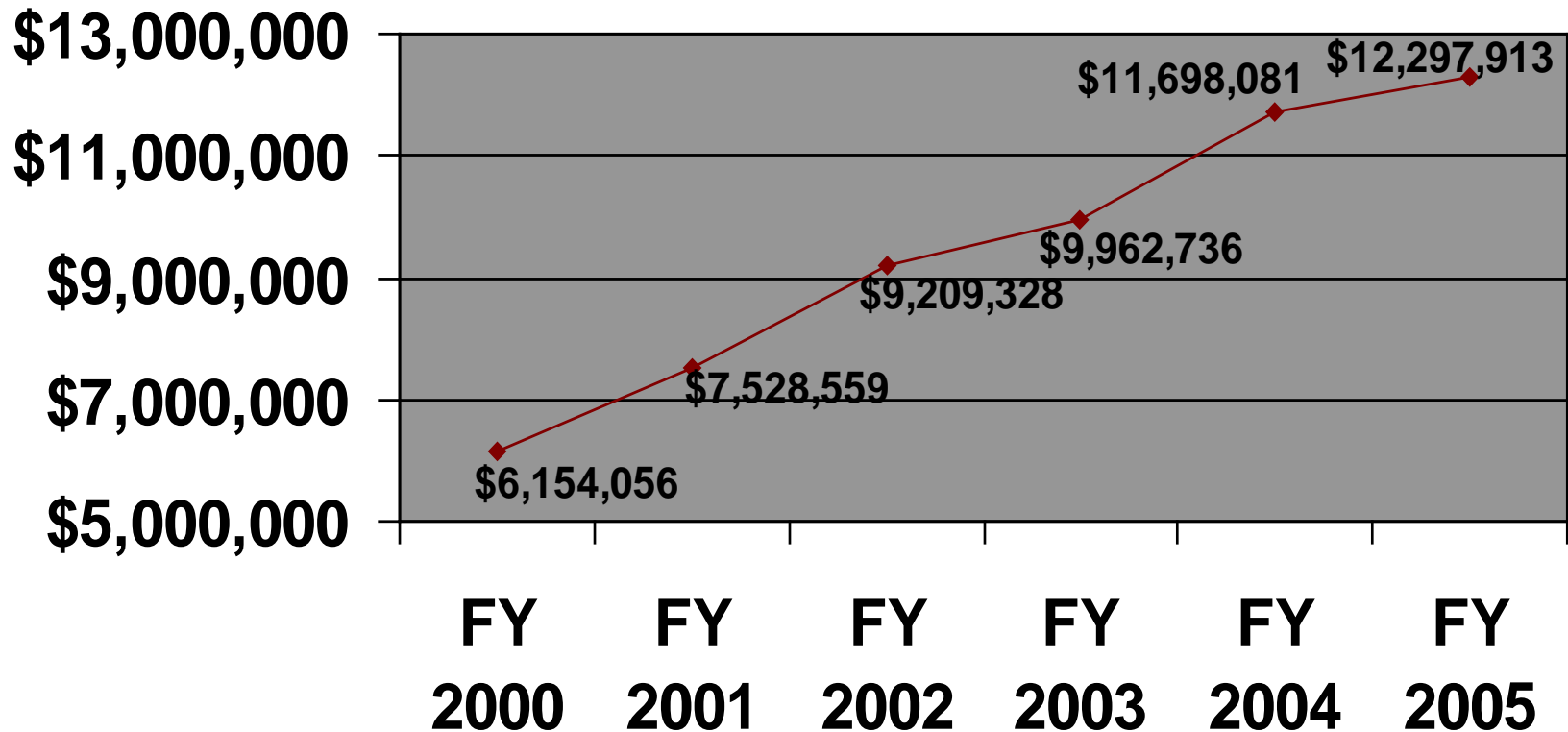
	2000	2001	2002	2003	2004
—■— Bachelor of Science in Education	380	515	599	592	618
—◆— Certificate in Institutional Research	0	0	0	0	1
—▲— Doctor of Education	12	12	13	12	13
—×— Doctor of Philosophy	26	61	62	85	76
—*— Master of Arts For Teachers	0	1	1	0	0
—●— Master of Science in Education	180	242	237	236	263
—+— Specialist in Education	4	15	25	21	32
—■— TOTAL	602	846	937	946	1003

School of Education Number of External Grant Proposals Submitted and Awarded



Note: 22 of the 106 proposals submitted in FY2005 are still pending

School of Education Amount of Research Expenditures



Faculty Publications:

● Refereed Article	162
● Book Chapter	91
● Non-Refereed Article	60
● Authored Book	19
● Edited Book	14
● Online Publication	9
● Website	6
● Video	4
● Multi-Media	3
● Film	1
● Other	88
● TOTAL	457

Professional Meetings, Colloquia and Seminars

● Paper Presentation	297
● Lecture	141
● Panel Presentation	118
● Keynote or Plenary Talk	103
● Respondent/Discussant	47
● Poster Session	35
● Other	125
● TOTAL	866

Faculty Service Activities

● School Services	354
● Professional Organization	313
● Department Service	273
● University Service	218
● National	195
● Community	92
● International	89
● K-12 Partnership	67
● State	55
● TOTAL	1713

U.S. News & World Report Rankings of Graduate Programs, 2005

- Overall School Ranking 15
- Programs in Top 15
 - Administration/Supervision 11
 - Counseling & Personnel 10
 - Curriculum & Instruction 10
 - Education Policy 14
 - Elementary Education 9
 - Higher Ed Administration 6
 - Secondary Education 11

Five-Year Dean's Report General Finding

- "Overall, the overwhelming assessment on the part of those who responded in one of these manners is that Dean Gonzalez is an extraordinarily effective representative of and advocate for the School of Education and a highly valued and respected member of the larger University community"

Assessments internal to the School more mixed though according to the report:

- "We emphasize that on balance the evaluations of his leadership within the School of Education were more positive than negative."

Chancellor's Comments on Five-Year Survey:

- **On another matter, you should know that your survey is about the best I have ever seen....**

Kenneth R.R. Gros Louis

Senior Vice President for Academic Affairs and Bloomington
Chancellor Indiana University Bryan Hall 100
Bloomington, IN 47405

(812) 855-9011

grosloi@indiana.edu

Areas of Concern identified:

- Core Campus Relationships
- Climate for Diversity
- Valuing Faculty Scholarship
- Faculty Governance

"Behold the Turtle. He only makes progress when he sticks his head out"

James B. Conant
1893-1978

